



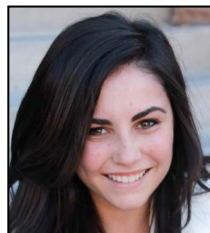
The Balkan Route

Screening and discussion with the film-makers

March 28, 2018
6:00 PM
ASU Tempe Campus,
Coor Hall, Room 174,
975 S. Myrtle Ave, Tempe

RSVP appreciated:
<https://balkan-route.eventbrite.com>

<https://melikian.asu.edu>
www.facebook.com/asu.mcreees
melikiancenter@asu.edu | 480-965-4188



Bailey Netsch



Tea Price

During 2015, over one million refugees and migrants entered the European Union from the Middle East and Africa. Prior to 2015 most had crossed the Mediterranean to Italy: in 2015-2016, more than three-quarters of a million traveled through Turkey to Greece, and on by land through the Western Balkans, before the route closed in March 2016.

In 2017, students from ASU and the University of Zagreb partnered to document the effects of this humanitarian crisis in Southeast Europe, and its relevance to the immigration debate in the United States.

The Balkan Route tells the untold story of refugees in their quest for safety and a better life. Two of the film-makers, Bailey Netsch and Tea Price, will introduce the film, and lead a discussion after the screening.

